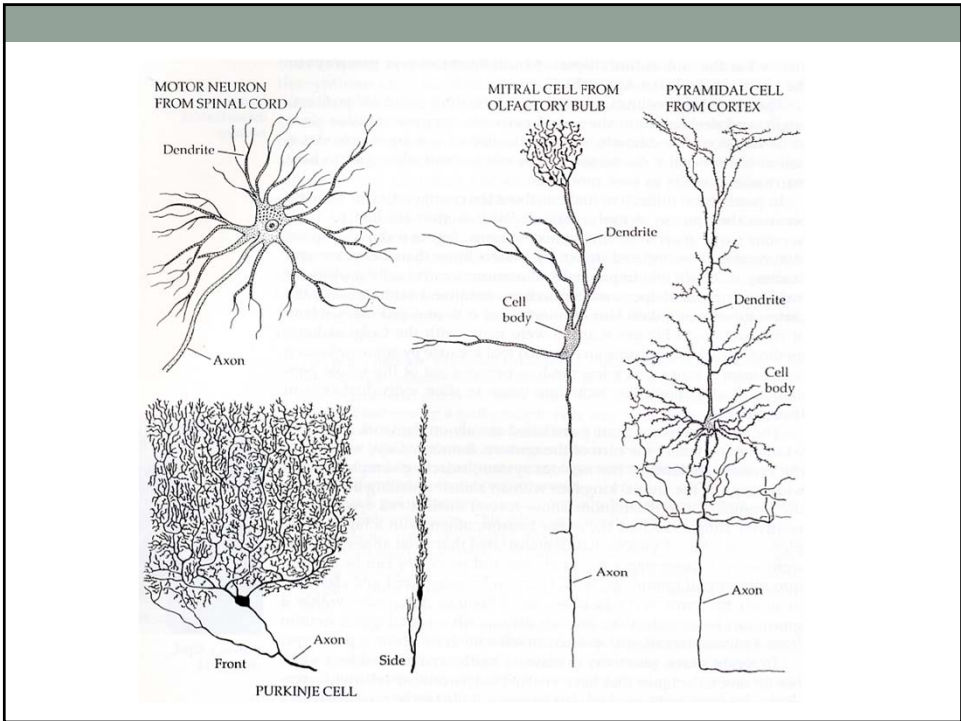
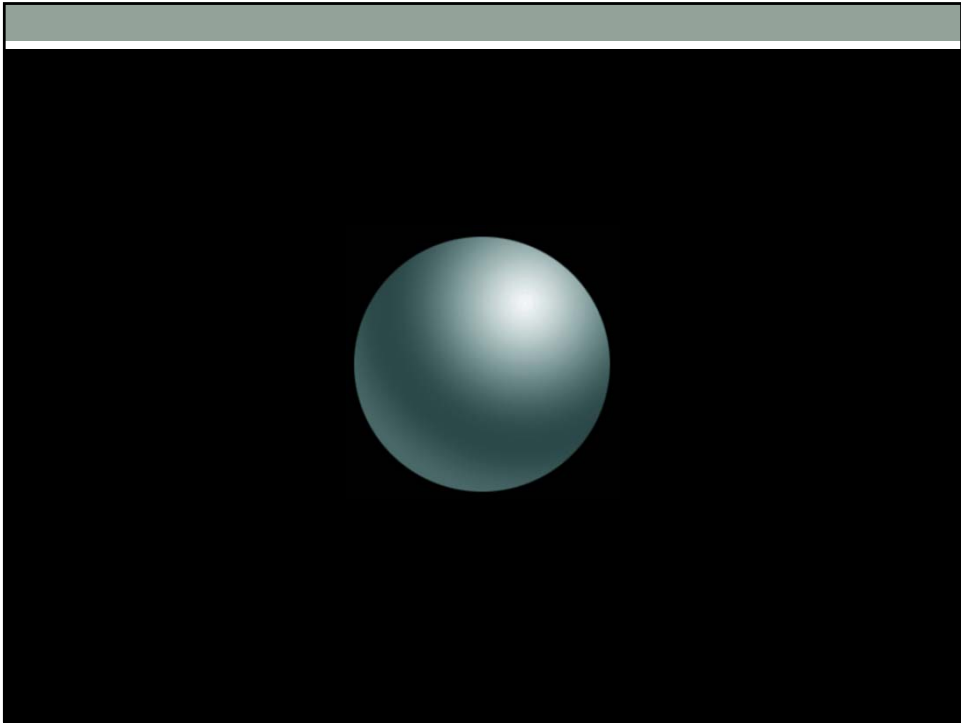


BIOL3833

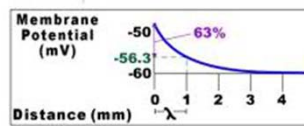
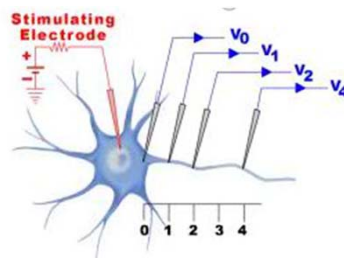
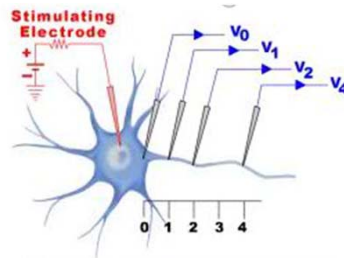
Week 2: Cable properties

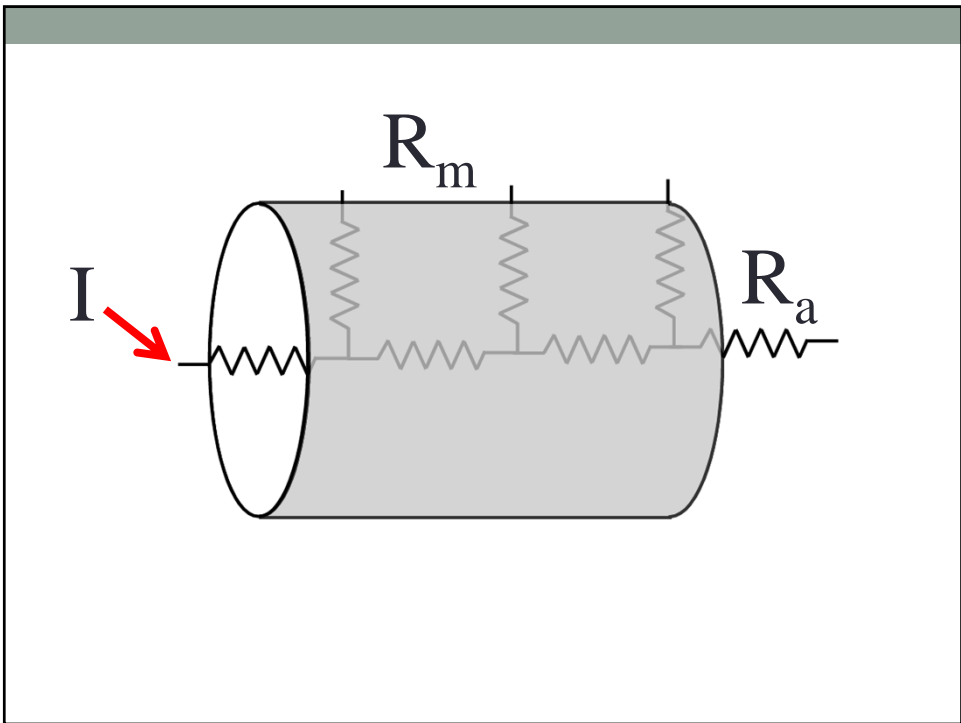
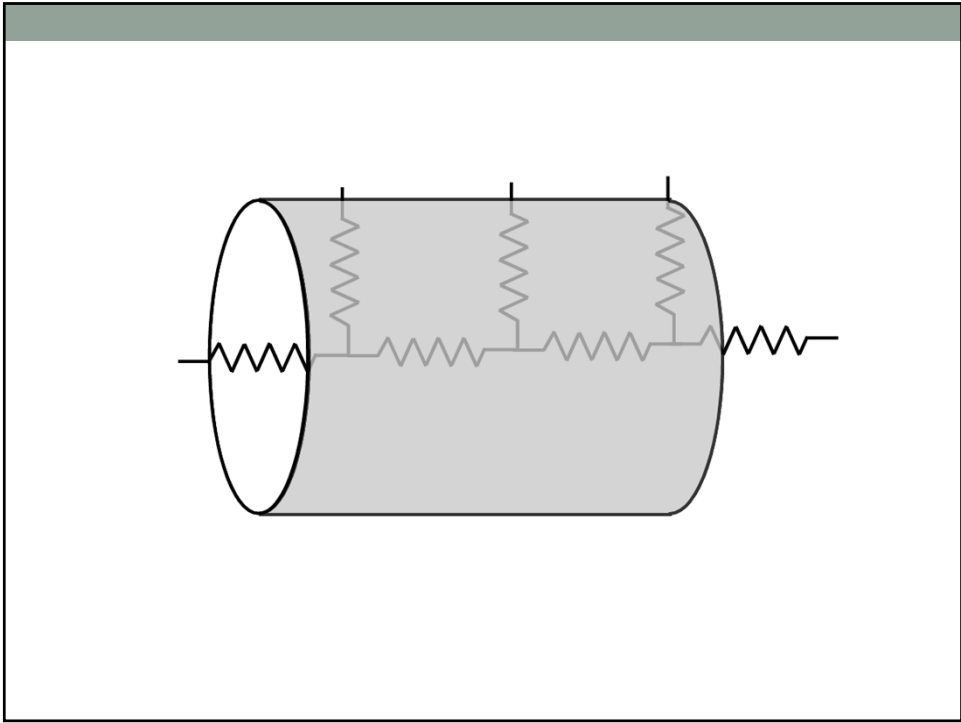
(passive membrane properties and Multiple Sclerosis)

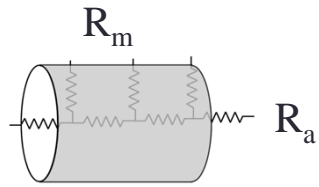
Administrative Stuff:



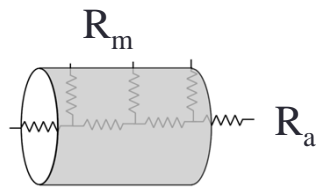
$V_{rest} = -60\text{mV}$
Depolarize to -50 mV







- How would you increase conduction velocity by changing R_a ?
- What are the limits on this strategy?



- How would you increase conduction velocity by changing R_m ?

